

Example of UI adaptor (UI Adapter Example)

Summary

This is an example on the UI adaptor for giving and taking the data in order to utilize outside UI tool to eGovFrame. This example provides the function which configures the screen with MiPlatform, utilizes eGovFrame, and performs basic CRUD tasks through the connection of corresponding screen.

Description

The image displays two screenshots of a web application interface, likely a board management system.

Top Screenshot: The window is titled "Board List Basic". It features a header bar with the text "리스트 조회". Below the header is a table with the following columns: "No.", "카테고리 ID", "카테고리 명", "사용여부", "Description", and "등록자". The table is currently empty. At the bottom right of the table area, there are two buttons: "엑셀" (Excel) and "인력" (Personnel). A "조회" (Search) button is located at the bottom left of the window. The status bar at the bottom indicates "처리메세지 : success".

Bottom Screenshot: This screenshot shows the same "Board List Basic" window, but with an "Insert Sample" dialog box open. The dialog box has a title bar "Insert Sample" and a header "새 항목 입력". It contains a form with the following fields: "Name" (text input), "UseYN" (dropdown menu), "Description" (text area), and "RegUser" (text input). Below the form is a button labeled "등록(Server)". The background window is partially obscured by the dialog box. The status bar at the bottom also indicates "처리메세지 : success".

새 항목 입력

Name	전자
UseYN	Y
Description	컴퓨터, 노트북, 외장하드 등
RegUser	admin

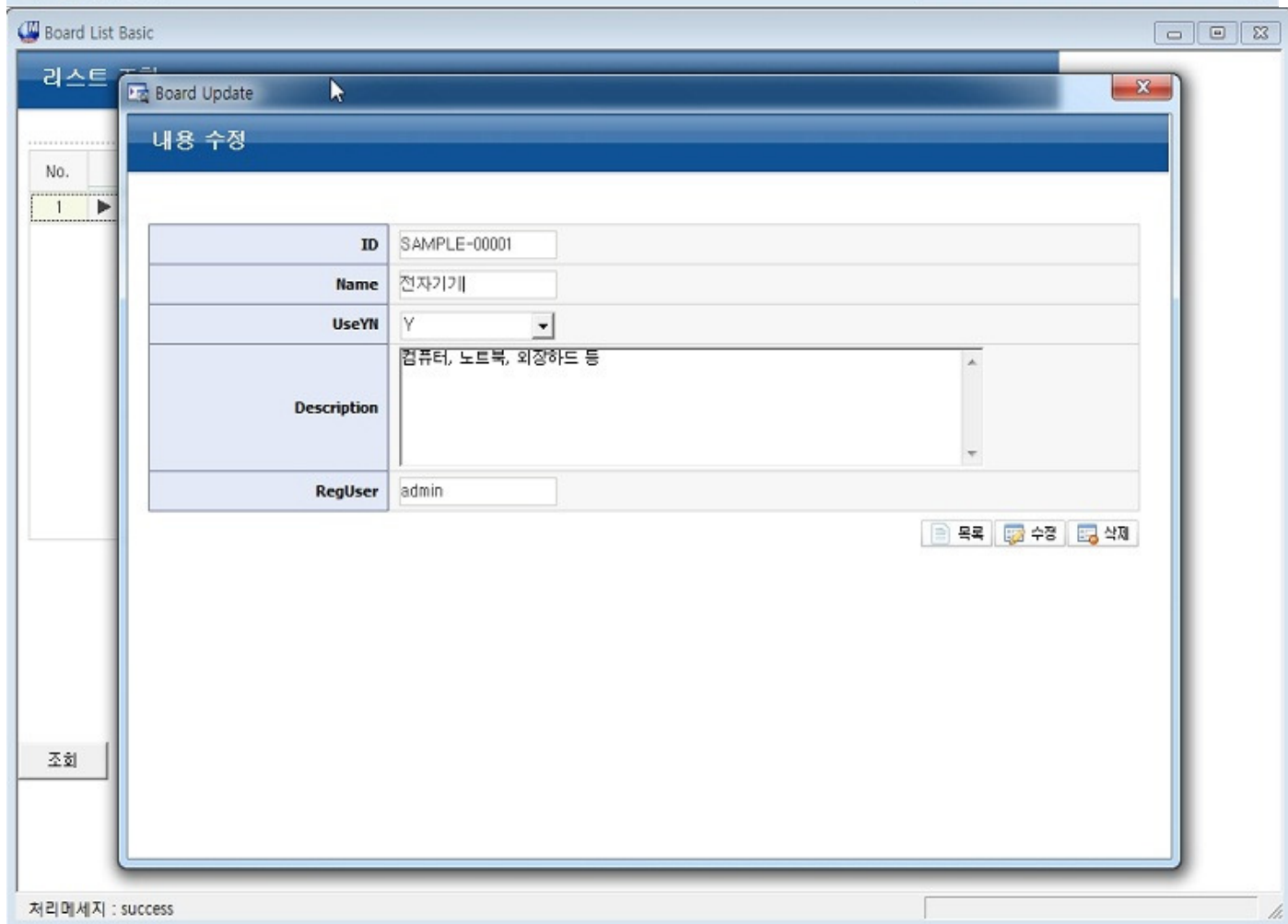
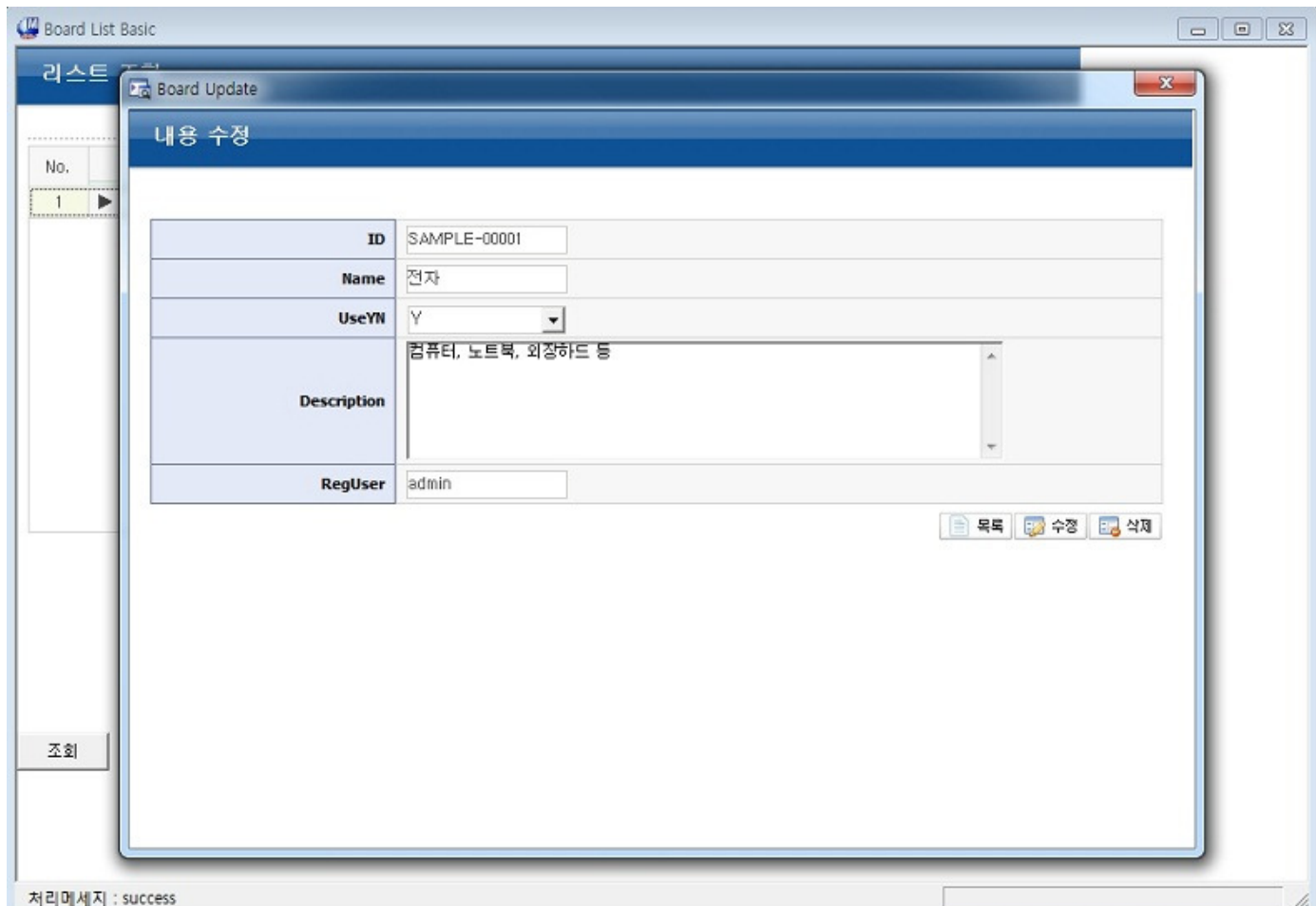
조회

처리메세지 : success

No.		카테고리 ID	카테고리 명	사용여부	Description	등록자
1	▶	SAMPLE-00001	전자	Y	컴퓨터, 노트북, 외장하드 등	admin

조회

처리메세지 : success



	A	B	C	D	E	F
1	No.	카테고리 ID	카테고리 명	사용여부	Description	등록자
2	1	SAMPLE-00001	전자기기	Y	컴퓨터, 노트북, 외장하드 등	admin
3						
4						

References